

**QT-Brightek Chip LED Series**

**SMD 1205 LED**

**Part No.: QBLP655R-Y-S2897**

**655R: Reverse Mount  
S2897: Ultra High Bright**

Product: QBLP655R-Y-S2897	Date: August 12, 2025	Page 1 of 9
	Version# 1.0	



---

**Table of Contents:**

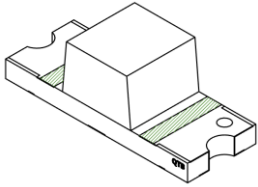
Introduction .....3  
Electrical / Optical Characteristic (Ta=25 °C) .....4  
Absolute Maximum Rating .....4  
Characteristic Curves.....5  
Solder Profile & Footprint.....6  
Packing .....7  
Labeling .....8  
Ordering Information .....8  
Revision History .....9  
Disclaimer .....9

Product: QBLP655R-Y-S2897	Date: August 12, 2025	Page 2 of 9
	Version# 1.0	

## Introduction

### Feature:

- Clear lens
- Package in tape and reel
- Ultra high bright yellow
- Viewing angle: 140 degrees typ.
- Reverse mount
- Height profile: 1.1mm



### Application:

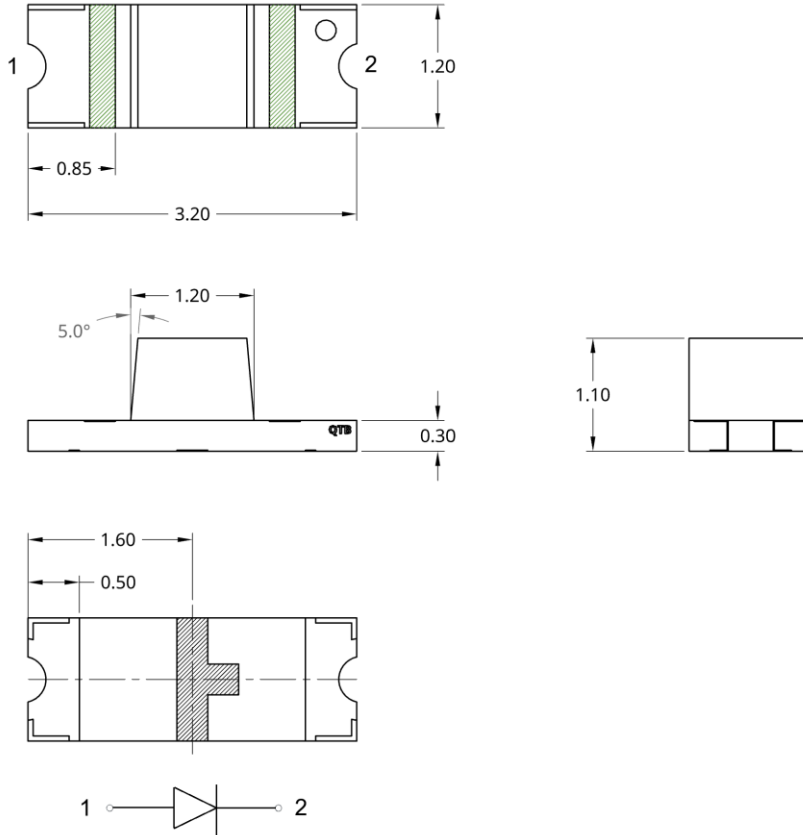
- Status indication
- Back lighting application

### Certification & Compliance:

- ISO9001
- RoHS Compliant



### Dimension:



Units: mm / tolerance = +/-0.1mm

## Electrical / Optical Characteristic (Ta=25 °C)

Product	Color	I <sub>F</sub> (mA)	V <sub>F</sub> (V)		λ <sub>D</sub> (nm)			λ <sub>p</sub> (nm)	I <sub>v</sub> (mcd)	
			Typ.	Max.	Min.	Typ.	Max.	Typ.	Min.	Typ.
QBLP655R-Y-S2897	Yellow	20	2.2	2.4	585	589	595	591	280	535

## Absolute Maximum Rating

Chip Material	P <sub>d</sub> (mW)	I <sub>F</sub> (mA)	I <sub>FP</sub> (mA)*	V <sub>R</sub> (V)	T <sub>OP</sub> (°C)	T <sub>ST</sub> (°C)	T <sub>SO L</sub> (°C)**
AllnGaP	72	30	100	5	-40 ~ +80	-40 ~ +85	260

\*Duty 1/10 @ 1kHz

\*\*IR Reflow for no more than 10 sec @ 260 °C

## Forward Voltage V<sub>F</sub> @ I<sub>F</sub>=20mA

Bin	Min.	Max.	Unit
□	1.7	2.4	V

## Luminous Intensity I<sub>v</sub> @ I<sub>F</sub>=20mA

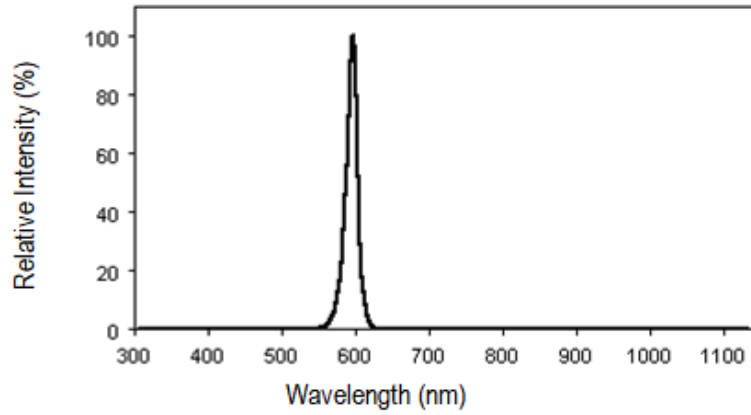
Bin	Min.	Max.	Unit
2N	280	358	mcd
2O	358	448	
2P	448	560	
2Q	560	706	
2R	706	890	

## Dominant Wavelength λ<sub>D</sub> @ I<sub>F</sub>=20mA

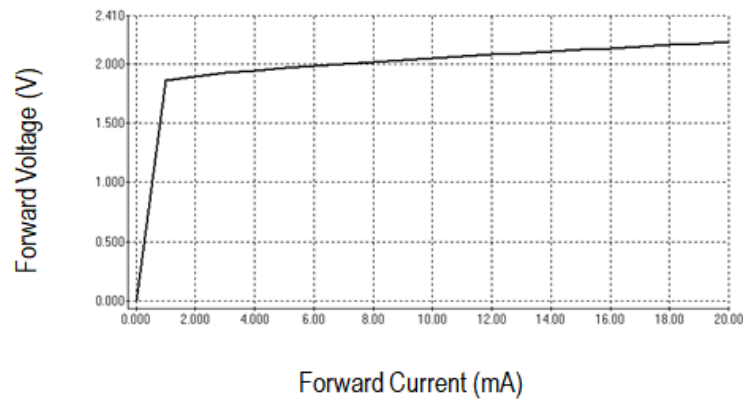
Bin	Min.	Max.	Unit
m	585	590	nm
n	590	595	

## Characteristic Curves

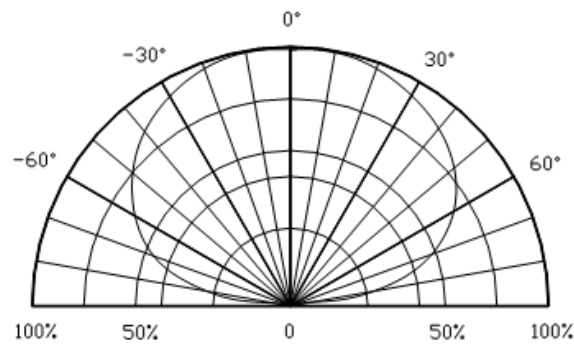
Relative Intensity vs. Wavelength



Forward Current vs. Forward Voltage

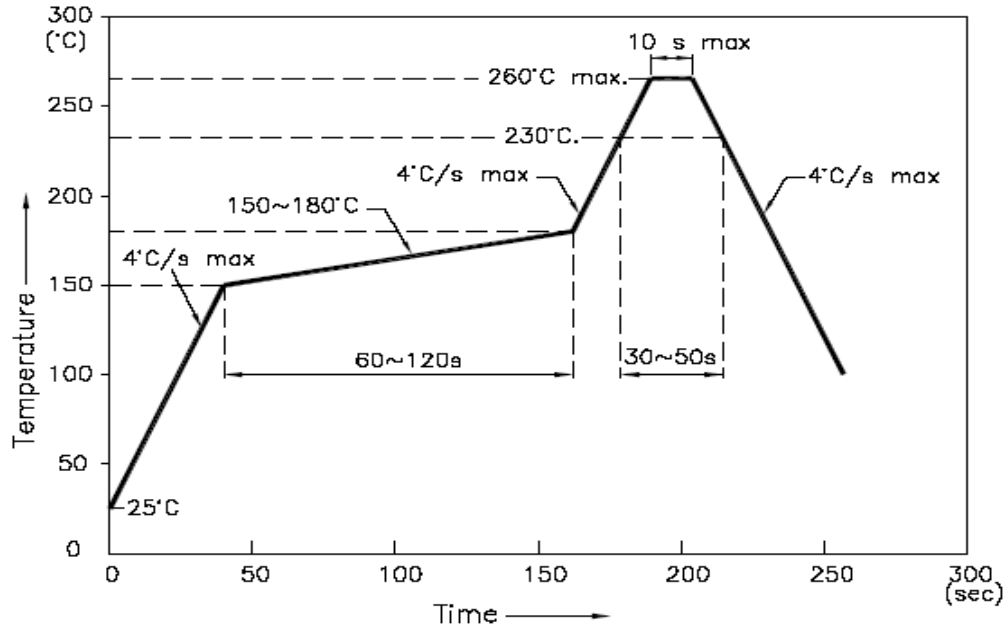


Directive Characteristics

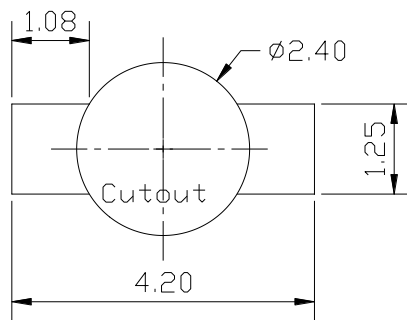


## Solder Profile & Footprint

-The recommended reflow soldering profile is as follows (temperatures indicated are as measured on the surface of the LED resin):



### Recommended Pad Layout



Units: mm



## Labeling



Part No: \_\_\_\_\_

Customer P/N: \_\_\_\_\_

Item: \_\_\_\_\_

Q'ty: \_\_\_\_\_

Vf: \_\_\_\_\_

Iv: \_\_\_\_\_

WI: \_\_\_\_\_

Date: \_\_\_\_\_

**Made in China**

## Ordering Information

Orderable Part #	Spec Range	Quantity per reel
QBLP655R-Y-S2897	Iv=535mcd typ. @ If=20mA / λD=585-595nm	3,000 units



## Revision History

Description:	Revision #	Revision Date
New Release of QBLP655R-Y-S2897	V1.0	08/12/2025

## Disclaimer

QT-BRIGHTTEK reserves the right to make changes without further notice to any products herein to improve reliability, function or design. QT-BRIGHTTEK does not assume any liability arising out of the application or use of any product or circuit described herein; neither does it convey any license under its patent rights, nor the rights of others.

## Life Support Policy

QT-BRIGHTTEK's products are not authorized for use as critical components in life support devices or systems without the express written approval of QT-BRIGHTTEK. As used herein:

1. Life support devices or systems are devices or systems which, (a) are intended for surgical implant into the body, or (b) support or sustain life, and (c) whose failure to perform when properly used in accordance with instructions for use provided in the labeling, can be reasonably expected to result in a significant injury of the user.
2. A critical component in any component of a life support device or system whose failure to perform can be reasonably expected to cause the failure of the life support device or system, or to affect its safety or effectiveness.

Product: QBLP655R-Y-S2897	Date: August 12, 2025	Page 9 of 9
	Version# 1.0	